

Summer School Sexuality in Perspective Leuven, 7-12 July 2019



AIMS

This Summer School will provide you with a **general introduction to the topic of human sexuality**. It will offer you the opportunity to learn about and reflect on contemporary scientific approaches to and current insights in human sexuality. The programme is based on the premise that the expression and experience of sexuality are influenced and regulated by a combination of biological, psychological, social, and cultural processes, including inter- and intra-personal norms and values.



PARTICIPANTS

The Summer School is open to **master's (MA/MS) and PhD students from all disciplines (e.g., psychology, sociology, gender studies, educational sciences, social work, nursing, biology, medicine)** who would like to learn more about contemporary insights in and approaches to the study of human sexuality.

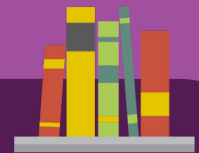
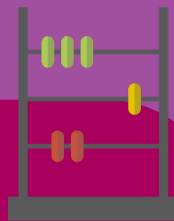
Considering the focus on interactive learning, the number of participants will be limited to 25.

FORMAT, FEES AND PRACTICAL INFORMATION

One **week with a variety of teaching formats** – lectures, workshops, readings, discussions in pairs, and presentations in smaller and larger groups – all with an emphasis on interactive learning. The faculty consists of **Paul Enzlin, Luk Gijs, and Erick Janssen**, with guest lectures by **Ellen Laan and Marieke Dewitte**.

The participation fee is €775, which covers the course and course materials (provided on a USB-stick, €675), KU Leuven registration (waived for KU Leuven students, €100), bus card, WIFI and library access, all lunches and coffee breaks (Monday through Friday), as well as welcome reception and farewell dinner.

The participation fee does not include travel to and from Leuven, accommodation, and additional meals (e.g., breakfast).



TOPICS

- Human sexuality throughout history and in different cultures.
- Evolutionary, psychological, sociological approaches to human sexuality.
- How and why do people, societies, and cultures define normality?
- The psychophysiology of sex.
- Sexual development from cradle to grave.
- Sexual identity, orientation, and preferences.
- Sexuality and mental and physical health/illness.

MORE INFORMATION?

<http://med.kuleuven.be/sssexualityinperspective>

Or send an e-mail to paul.enzlin@kuleuven.be or heidi.demin@kuleuven.be